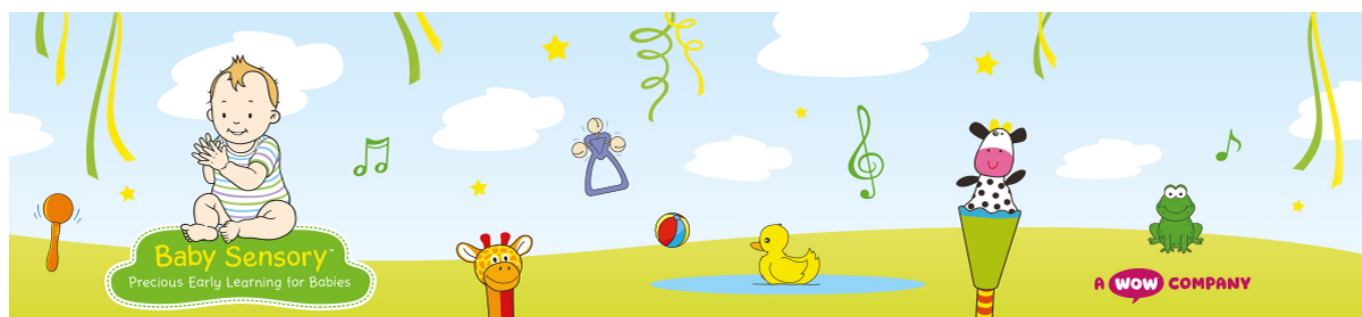


- [Kesgrave Community Website](#)
- [A-Z](#)
- [Clubs](#)
- [Club Timetable](#)
- [Venue Timetable](#)
- Details

Baby Sensory (Birth - 7 Months)

Friday: 11:15–12:15



Introduction

Our Baby Sensory classes are specifically designed for parents with babies from birth to 13 months and all Baby Sensory practitioners are highly trained to lead activities which help with bonding and support the early development of the babies and parents in the Early Years sector.

We also answer many questions from parents who are struggling to come to terms with their new responsibilities and help new parents to understand that they are not alone with the challenges they are facing.

Our classes are support groups and are vital for new parents to meet others where they can share experiences with each other, help ease postnatal depression and improve mental health. Simply the physical activity of getting out of the house and making friendships with others can make all the difference to new parents, albeit socially distanced in a covid secure environment.

Location


•



[Millennium Jubilee Hall, Millennium Way, Kesgrave IP5 2EN](#)

Contact

•
 **07825 350780**

•
 ipswich@babysensory.co.uk

•
 [@ipswichbabysensory](https://www.facebook.com/ipswichbabysensory)

•
 www.babysensory.com/ipswich

Last updated: 23 July 2021

Location: Millennium Jubilee Hall - IP5 2EN